

LIGHTING SCHEDULE

- L1 Supply and install new luminaire on new column. (See Luminaire & Column Notes 1 to 5)
 Luminaire: Philips Roadgrace 26W LED luminaire (BRP711 LED30NW 26W PSSD I DWP) 4000K, Color: Gray.
 Dimming: N/A
 Column: 7.4m SDC standard ground planted Subdivisional octagonal column with a 1.5m 10° tilt curved outreach arm with a 5° degree 42mm O.D. spigot, Color: Black..
 Connection: Connect to U/G SLN
- L2 Supply and install new luminaire on new column. (See Luminaire Notes 1 to 5)
 Luminaire: AEC Techlight ITALO 2 STW 4.5-5M (5 Module LED) 95W luminaire mounted at 10.6m, Color: Gray
 Dimming: N/A
 Column: 10.6m MH Sectional Octagonal column c/w double 3.0m 15° tilt Mitred outreach arm and a 42mm 5° tilt to the horizontal spigot, Color: Black.
 Connection: Connect to U/G SLN

MAXIMUM DESIGN SPACING

Street Name	Width	Arrangement Type*	Max Spacing
Selwyn Road	20.0m	Single Sided	62.9m

* = Arrangement type as per AS/NZS 1158.2:2020 Fig. 5.1

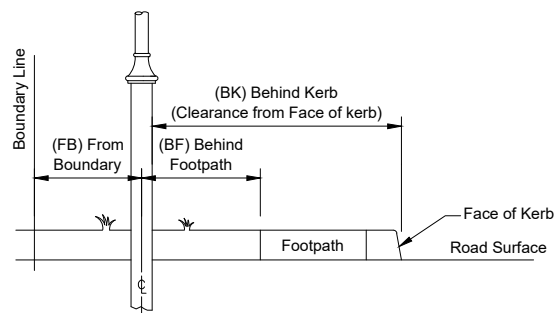
SYMBOLS:

- New column, outreach arm and luminaire.
- Existing Pole, outreach arm and luminaire to remain.
- Existing O/H SLN aerial

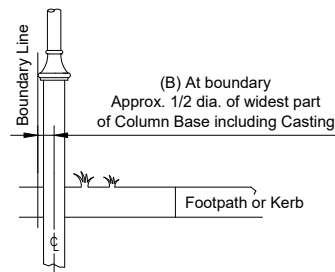
SYMBOLS LEGEND:

- LX XXXW P1 0.0-XX
Lighting Schedule Reference
Lamp Wattage
Column Identification
Column offset
- X°
Luminaire Tilt from the horizontal
(See Adjustment Table)
- B At Boundary
- BEL Behind Edge Line
- BK Behind Kerb
- FB From Boundary

TYPICAL COLUMN POSITION:



Column to be installed from Boundary Line, Behind Footpath or from Face of Kerb



Column to be installed at Boundary Line

For Sectional Octagonal Column	
With Mitred Arms and 5° Spigot*	
With Elliptical Arms and 5° Spigot*	
With Curved Arms and 5° Spigot*	
Subdivisional with 5° Spigot*	
Value Shown on Plan	Adjustment on Luminaire
10°	5°
5°	0°
0°	-5°
-5°	-10°

* As per CCC and SDC Standard Column Requirements

ISSUED FOR APPROVAL
 Friday, October 29, 2021 9:56:55 AM
NOT FOR CONSTRUCTION

KEY PLAN



LUMINAIRE & COLUMN NOTES:

- Luminaire are to be fitted with mounting bracket to fit 42mm spigot.
- Luminaire to be supplied with an integral TMS compatible dimmable DALI driver suitable for operating at the specified load and a prewired 7 pin Nema Socket and complete with shorting cap.
- Luminaire to have an IP rating of IP66 unless stated otherwise.
- Luminaire colour temperature to be 4000K
- Luminaire to have Identification label applied at time of installation.

GENERAL NOTES:

- Road illumination is designed to comply with AS/NZS 1158; subcategory PR4 and SDC "Code of Practice Part 11" and NZTA M30.
- Consult the designer for any lighting installation works that conflict on site. eg. recorded or unrecorded services.
- On completion documentation, record GPS location of all new Lighting columns.
- All redundant recovered streetlight poles and lanterns shall be removed to the store of the SDC Maintenance Contractor (Connetics Ltd, 11 Islington Avenue, Islington - Contact: Martin Msimanga).
- New column location to be marked by the main contractor and verified by lighting designer prior to lighting installation.
- Existing Services Identified in this design are indicative only and it is the contractor responsibility to locate any existing services by contacting BeforeUdig at <https://www.beforeudig.co.nz> before the start of any underground work.

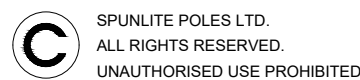
SPUNLITE NOTE:

The use of this **FREE** Lighting design, is authorised by Windsor Urban Ltd and Spunlite Poles Ltd, and is conditional upon the specified lighting items(columns and luminaires), being purchased directly from Windsor Urban Ltd and Spunlite Poles Ltd, or our nominated agents. All nominated installing agents are to contact Windsor Urban Ltd and Spunlite Poles Ltd, to obtain product prices related to this project.

Any use of alternative manufacturer's products, differing from those listed in this design, and installed by any contractor, will automatically forfeit the right to use this intellectual property (lighting design).

Windsor Urban Ltd and Spunlite Poles Ltd hold all copyrights to any of our designs and manufactured products in accordance with the Berne Convention.

The lighting designer reserves the right to request that any alternative products, sourced from a non-listed manufacturer, be removed and replaced with the specified products, prior to any audit being conducted.



Rev	Description	Date	Des	Dn	Chk	Apd	Or Acp	Contractor	Designed	R. St-Denis / Conn	Sept 20
A	Issued to client for comments	11/09/20	RSD	RSD	-	-	-	-	Drawn	R. St-Denis / Conn	Sept 20
B	Issued to SDC for Final Approval	03/11/21	RSD	RSD	-	-	-	-	Checked	L. Timan / Conn	Nov 21
									Approved	B. Hayman for SDC	-

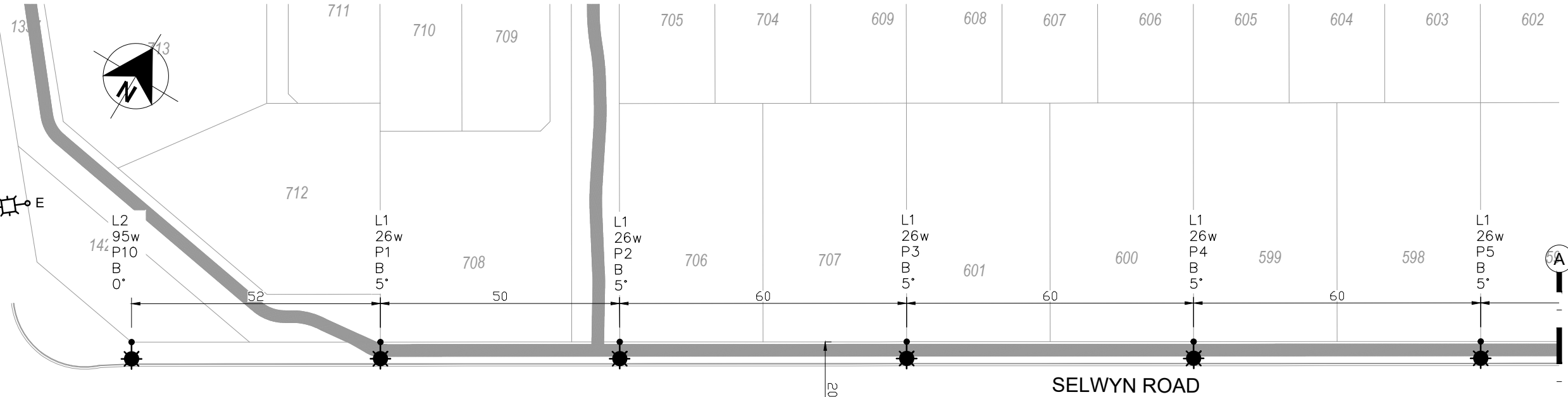
STREETLIGHTING LAYOUT
 Acland Park Sub-Division
 Selwyn Road
 Rolleston

611 Halswell Junction Rd, Hornby, Christchurch, NZ
 (03) 349-7853 fax (03) 349-6529 freeph (0800) 845-845
 Inet: www.spunlite.co.nz

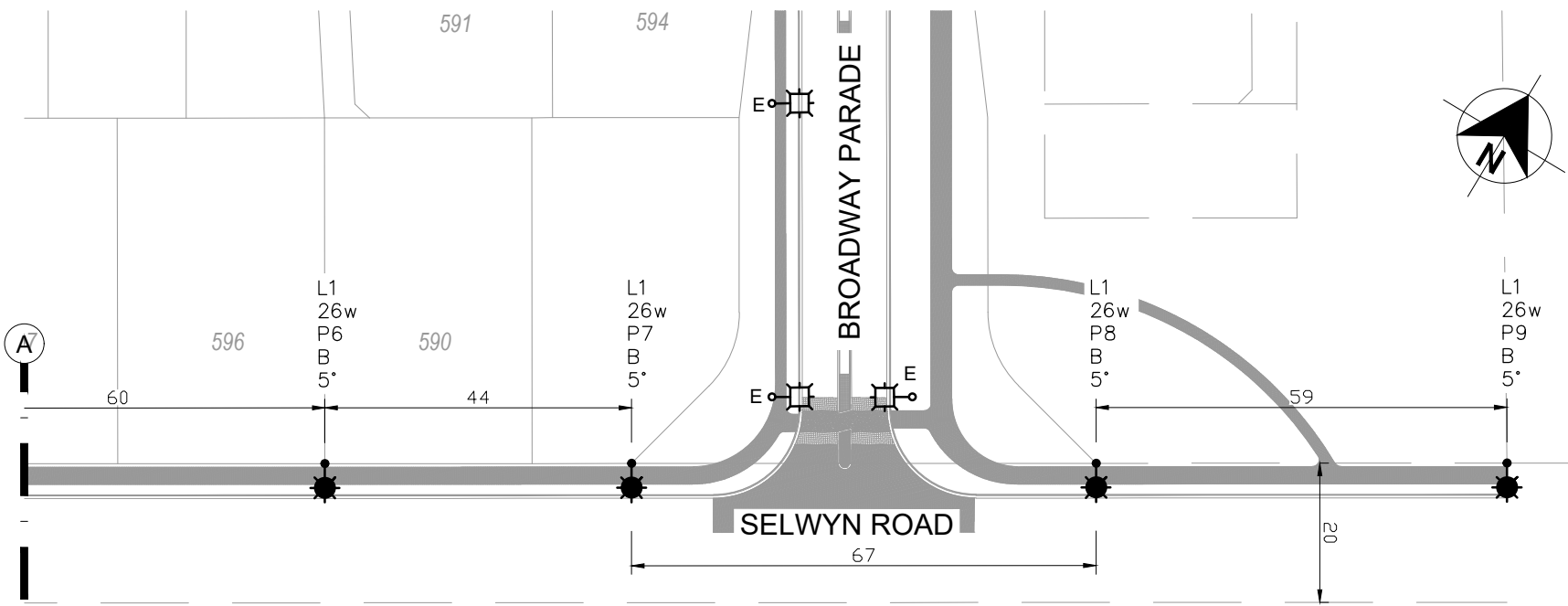
Size	Drawing Number	Sheet
A3	400102	1/2

1 : 1500
1 : 1000

RINGSTON / ROLLESTON RD.



1 : 1500



1 : 1000

- NOTES:**
1. Refer to Sheet 1 for Luminaire Schedule and Legend.

ISSUED FOR APPROVAL
Friday, October 29, 2021 10:07:22 AM
NOT FOR CONSTRUCTION

SPUNLITE POLES LTD.
ALL RIGHTS RESERVED.
UNAUTHORISED USE PROHIBITED

Rev	Description	Date	Des	Dn	Chk	Apd	Or Acp	Contractor	Designed	R. St-Denis / Conn	Sept 20	Scale
A	Issued to client for comments	11/09/20	RSD	RSD	-	-	-	-	Drawn	R. St-Denis / Conn	Sept 20	1:1000
B	Issued to SDC for Final Approval	03/11/21	RSD	RSD	-	-	-	-	Checked	L. Timan / Conn	Nov 21	
									Approved	B. Hayman for SDC	-	
												Revision
												B

STREETLIGHTING LAYOUT

Acland Park Sub-Division
Selwyn Road
Rolleston

SPUNLITE POLES LIMITED
611 Halswell Junction Rd, Hornby, Christchurch, NZ
(03) 349-7853 fax (03) 349-6529 freeph (0800) 845-845
inet: www.spunlite.co.nz

Size	Drawing Number	Sheet
A3	400102	2 / 2