

To:


**WORK DESCRIPTION: Acland Park subdivision, Stages 11-16 not 12.****Cable work in compliance with Orion NZ Network Design & Construction Standards.**

Street Lights in compliance with manufacturers &amp; Council requirements (Windsor Spec).

- 1) Supply & Install HV reticulation to two new kiosk sites.
- 2) Supply & Install LV reticulation to new lots & lights. NB Allow for two stages of enlivenment.
- 3) Complete 2x kiosk installations.
- 4) Install street lights, delivered to site by developer, to Windsor specifications.
- 5) Allow for dig/backfill: at existing kiosks & for HV joint.

*Cable Trenching/100mm RC ducting by developer. Surveyor to peg 2 x kiosk title sites: Lot 619 & Lot 695, also mark all SL locations.*

SIZE	FUSE/ LINK	REF	CABLE SIZE	Tender Length	<b>HV System Work</b>
	3K1T	Cct.	HV Cables	(mtr)	For new kiosks install new electrodes & leads. Supply HV fuses for each new kiosk MSU.
Links	Closed	51	185mm <sup>2</sup> 3c AI XLP	433	<b>Jean Batten Ln Lot 619, L3/609 (Install full kiosk, 3k1T MSU with 300kVA). This kiosk enlivened first.</b> Connect & lay to new kiosk "Finn Ave Lot 695".
Links	Closed	52	185mm <sup>2</sup> 3c AI XLP	267	Connect & lay to ex kiosk "Selwyn Rd Lot 1330".
Links	Closed	53	185mm <sup>2</sup> 3c AI XLP	219	Connect & lay to ex kiosk "Lovelock Ave Lot 575".
Fuses	Closed	54	25mm <sup>2</sup> AL 3x1c XLP	Leads	Install leads to 300kVA transformer (supply & enliven with 25FFLNJ fuses).
	3k1T				<b>Finn Ave Lot 695, L3/610 (Install full kiosk, 3k1T MSU with 300kVA).</b>
Links	Closed	51	185mm <sup>2</sup> 3c AI XLP	120	Connect & lay to thru jt with HV185AI3c Cd12563 from "Avanda Ave No60" (after removing from Finn Ave No2).
Links	Closed	52	185mm <sup>2</sup> 3c AI XLP	150	Connect & lay to ex kiosk "Finn Av No2".
	Open	53	185mm <sup>2</sup> 3c AI XLP	---	Connect cable from new kiosk "Jean Batten Ln Lot 619"
Fuses	Closed	54	25mm <sup>2</sup> AL 3x1c XLP	Leads	Install leads to 300kVA transformer (supply & enliven with 25FFLNJ fuses).
	2K1T				<b>HV Cable connections at existing kiosks</b>
Links	Closed	51	185mm <sup>2</sup> 3c AI XLP	Ex	<b>Lovelock Ave Lot 575, L3/588 (Ex full kiosk, 2k1T MSU with 300kVA).</b> Existing cable kiosk "TeKanawa Ln Lot 517".
	Closed	52	185mm <sup>2</sup> 3c AI XLP	---	Connect cable from new kiosk "Jean Batten Ln Lot 619"
Fuses	Closed	53	25mm <sup>2</sup> AL 3x1c XLP	Leads	Ex leads to 300kVA transformer (25FFLNJ fuses).
	3K1T				<b>Selwyn Rd Lot 1330, L3/602 (Ex full kiosk, 3k1T MSU with 200kVA).</b>
Links	Closed	51	185mm <sup>2</sup> 3c AI XLP	Ex	Existing cable kiosk east in Selwyn Rd to OH L3/603 (Sprn 113 feeder).
Links	Closed	52	185mm <sup>2</sup> 3c AI XLP	Ex	Existing cable west to 1/4 kiosk "Selwyn Rd crn Springston Rolleston Rd".
	Open	53	185mm <sup>2</sup> 3c AI XLP	---	Connect cable from new kiosk "Jean Batten Ln Lot 619"
Fuses	Closed	54	25mm <sup>2</sup> AL 3x1c XLP	Leads	Ex leads to 200kVA transformer (16FFLNJ fuses).
	3K1T				<b>Finn Ave No 2, L3/522 (Ex full kiosk, 3k1T MSU with 200kVA).</b>
Links	Closed	51	185mm <sup>2</sup> 3c AI XLP	---	Remove ex HV185AI3c xlp Cd12563 & connect new185AI from kiosk "Finn Ave Lot 695".

Accepted  
**Orion**  
  
Paul Golding  
01 12 2021

Cable quantities for tender use, with 5mtrs allowed for cable tails at kiosks.

Developer to complete trenching and install 100mm ducts (Road crossings).

Sheet No.

1 of 8

refer HV, LV &amp; SL schematics

Date: 28/10/2021

Issue: A

Design-Net Ref: DN-2017

SIZE	FUSE/ LINK	REF	CABLE SIZE	Tender Length	LV System Work (from 2 new kiosks)
		Cct.	LV Cables	(mtr)	
Size 3	Links	PS	185mm <sup>2</sup> Cu 4x1c	Leads	<b>Jean Batten Ln Lot 619, L3/609 (Install full kiosk, DIN panel, incomer, 6 circuits). This kiosk enlivened first.</b> Install leads from central incomer (800amp rated) to Transformer.
Size 3	355amps	1	185mm <sup>2</sup> Al 3c+ 1c NS	319	Connect & lay west in Jean Batten Ln to 3way "Jean Batten Lot 501".
Size 3	355amp	2	<b>300mm<sup>2</sup> Al 3c+ 1c NS</b>	<b>168</b>	Connect & lay west in Jean Batten Ln to 3xDBS, at Lot 1002 then 103m LV185Al3cNS to "Dodd Lot 686".
Size 3	500amps	3	<b>300mm<sup>2</sup> Al 3c+ 1c NS</b>	<b>110</b>	Connect & lay to 1xDBS then 3way DCM "Finn Lot 618".
Size 3	355amp	4	185mm <sup>2</sup> Al 3c+ 1c NS	370	Connect & lay to 7xDBS then 2way DCM "Finn Lot 709".
Size 3	Open	5	185mm <sup>2</sup> Al 3c+ 1c NS	472	Connect & lay to boxes on Selwyn Rd to kiosk "Selwyn Rd Lot 1330". Also 130m LV120Al3cNS to 2xDBS ending at 706.
Size 3	Open	6	185mm <sup>2</sup> Al 3c+ 1c NS	235	Connect & lay to 3xDBS to Broadway Pde to kiosk "Lovelock Ave Lot 575".
					<b>Finn Ave Lot 695, L3/610 (Install full kiosk, DIN panel, incomer, 6 circuits).</b>
Size 3	Links	PS	185mm <sup>2</sup> Cu 4x1c	Leads	Install leads from central incomer (800amp rated) to Transformer.
Size 3	355amp	1	185mm <sup>2</sup> Al 3c+ 1c NS	256	Connect & lay to 5x Boxes then 2way DCM "Avanda Lot 652" Cct2.
Size 3	Open	2	185mm <sup>2</sup> Al 3c+ 1c NS	161	Connect & lay west to kiosk "Finn Ave No2". Also 64m LV120Al3cNS from DBT to DBS 668/669.
Size 3	355amp	3	185mm <sup>2</sup> Al 3c+ 1c NS	195	Connect & lay east to 4xDBS to 2way DCM "Finn Lot 709".
Size 3	355amp	4	185mm <sup>2</sup> Al 3c+ 1c NS	436	Connect & lay east, then nth to boxes to 3way DCM "Avanda Lot 612" Cct1, then to 3way DCM "Finn Lot 618" Cct2.
Size 3	355amp	5	185mm <sup>2</sup> Al 3c+ 1c NS	212	Connect & lay to 3xDBS to 3way DCM "Avanda Lot 612" Cct3.
Size 3	355amp	6	185mm <sup>2</sup> Al 3c+ 1c NS	243	Connect & lay to 3x Boxes then 2way DCM "Avanda Lot 652" Cct1.
					<u>LV Cable connections &amp; install from existing kiosks</u>
					<b>Lovelock Ave Lot 575, L3/588 (existing kiosk, DIN panel, incomer, 6 circuits).</b>
					<u>Ex circuits 1,2, 3 no change.</u>
Size 3	355amp	4	185mm <sup>2</sup> Al 3c+ 1c NS	115	Connect & lay to DBS Cowley Ln Lot 505. This cable from "Cowley Lot 1241" = Cct 2, make open.
Size 3	355amp	5	185mm <sup>2</sup> Al 3c+ 1c NS	334	Connect & lay to 8x DBS Broadway Pde, to ex. DCM "Broadway 74".
Size 3	355amp	6	185mm <sup>2</sup> Al 3c+ 1c NS	---	Connect cable from new kiosk "Jean Batten Ln Lot 619" Cct 6.
					<b>Finn Ave No2, L3/522 (existing kiosk, DIN panel, incomer, existing 2 circuits. Equip 2 ccts).</b>
					<u>Equip ccts 2 &amp; 3</u>
Size 3	355amp	2	185mm <sup>2</sup> Al 3c+ 1c NS	---	Connect cable from kiosk "Finn Ave Lot 695".
Size 3	355amp	3	185mm <sup>2</sup> Al 3c+ 1c NS	230	Connect & lay nth to 3xDBS in Dodd Rd, to DCM "Dodd Lot 686"
					<u>Ex circuits 4&amp;5 no change.</u>
					<b>Selwyn Rd Lot 1330, L3/602 (Ex full kiosk, DIN panel, incomer &amp; 4 ccts).</b>
Size 3	355amp	2	185mm <sup>2</sup> Al 3c+ 1c NS	---	Connect new cable from kiosk "Jean Batten Ln Lot 619".
					<u>Ex circuits 1,3,4 no change.</u>

Accepted  
**Orion**  
  
Paul Golding  
01 12 2021

Cable quantities for tender use, with 3mtrs allowed for each LV tails at DBS.  
Developer to complete all trenching and install 100mm ducts (Road crossings).

Sheet No.

2 of 8


refer HV, LV & SL schematics


Date: 28/10/2021

Issue: A

Design-Net Ref: DN-2017

SIZE	FUSE/ LINK	REF	CABLE SIZE	Tender Length	<b>LV System Work</b>
		Cct.	LV Cables	(mtr)	<b>LV Box work for Distribution Cabinets. 8 new cabinets &amp; one excising with a 4th way added.</b>
Size 3	Open	1	185mm <sup>2</sup> Al 3c+ 1c NS	----	<b><u>Broadway 74 (ex 3 way M1 add 4th way &amp; 2xservice fuses on standoff bars cct4).</u></b> Connect cable from ex kiosk "Lovelock Ave Lot 575".
Size 3	Links	2	185mm <sup>2</sup> Al 3c+ 1c NS	Ex	Re Connect cable from ex kiosk "off Lady Isaac Dr Lot 332".
Size 3	Links	3	185mm <sup>2</sup> Al 3c+ 1c NS	Ex	Re Connect cable from ex. DCM "Broadway 66".
Size 3	Links	4	185mm <sup>2</sup> Al 3c+ 1c NS	Ex	Re Connect cable from new DCM "Jean Batten Lot 501".
Size 3	Links	1	185mm <sup>2</sup> Al 3c+ 1c NS	Ex	<b><u>Jean Batten Lot 501 (replace DBS with 3 way M1, with 1 service fuse position 4a).</u></b> Connect cable from DCM "Broadway 74".
Size 3	Open	2	185mm <sup>2</sup> Al 3c+ 1c NS	Ex & 6m	Connect cable from new DCM "Avanda Lot 682". Also allow 6m for cut & swing on this cable for DBS Lot 1247.
Size 3	Open	3	185mm <sup>2</sup> Al 3c+ 1c NS	---	Connect cable from new kiosk "Jean Batten Ln Lot 619".
Size 3	355amp	1	185mm <sup>2</sup> Al 3c+ 1c NS	298	<b><u>Finn Lot 618 (install 3 way M1, with 2 service fuses position 4a).</u></b> Connect & lay west to 2way DCM "Dodd Lot 648", also 33m LV120Al3cN to DBS Lot 631.
Size 3	Open	2	185mm <sup>2</sup> Al 3c+ 1c NS	---	Connect cable from new kiosk "Finn Ave Lot 695" & 3way "Avanda Lot 612".
Size 3	Links	3	300mm <sup>2</sup> Al 3c+ 1c NS	---	Connect cable from new kiosk "Jean Batten Ln Lot 619".
Size 3	Open	1	185mm <sup>2</sup> Al 3c+ 1c NS	---	<b><u>Avanda Lot 612 (install 3 way M1, with 2 service fuses position 4a).</u></b> Connect cable from new kiosk "Finn Ave Lot 695" & 3way "Finn Lot 618".
Size 3	Links	2	185mm <sup>2</sup> Al 3c+ 1c NS	199	Connect & lay to 4xDBS to 2way DCM "Dodd Lot 648".
Size 3	Links	3	185mm <sup>2</sup> Al 3c+ 1c NS	---	Connect cable from new kiosk "Finn Ave Lot 695".
Size 3	Links	1	185mm <sup>2</sup> Al 3c+ 1c NS	---	<b><u>Finn Lot 709 (install 2 way M1, with 2 service fuses positions 4a).</u></b> Connect cable from new kiosk "Jean Batten Ln Lot 619".
Size 3	Open	2	185mm <sup>2</sup> Al 3c+ 1c NS	---	Connect cable from new kiosk "Finn Ave Lot 695".
Size 3	Open	1	185mm <sup>2</sup> Al 3c+ 1c NS	---	<b><u>Dodd Lot 648 (install 2 way M1, with 2 service fuses positions 4a).</u></b> Connect cable from new DCM "Finn Lot 616".
Size 3	Links	2	185mm <sup>2</sup> Al 3c+ 1c NS	---	Connect cable from new DCM "Avanda Lot 612".
					<b><u>For new DCMs, service fuses= Bus mount in position 4a for first 3 fuses &amp; 4b for next 3fuses(if required).</u></b>
Cable quantities for tender use, with 3mtrs allowed for each LV tails at DBS. Developer to complete all trenching and install 100mm ducts (Road crossings).					Sheet No.  3 of 8
					refer HV, LV & SL schematics
					<b>Date:</b> 28/10/2021
					<b>Issue:</b> A
					<b>Design-Net Ref:</b> DN-2017

**Accepted**  
**Orion**  
  
**Paul Golding**  
01 12 2021

SIZE	FUSE/ LINK	REF	CABLE SIZE	Tender Length	<b><u>LV System Work</u></b>
		Cct.	LV Cables	(mtr)	<b><u>LV Box work for Distribution Cabinets (continued).</u></b>
Size 3	Open	1	185mm <sup>2</sup> Al 3c+ 1c NS	---	<b><u>Avanda Lot 652 (install 2 way M1, with 2 service fuses positions 4a).</u></b>
Size 3	Links	2	185mm <sup>2</sup> Al 3c+ 1c NS	---	Connect cable from new kiosk "Finn Ave Lot 695" cct 6.
					Connect cable from new kiosk "Finn Ave Lot 695" cct 1.
Size 3	Links	1	185mm <sup>2</sup> Al 3c+ 1c NS	123	<b><u>Dodd Lot 686(install DBS with 3 way M1, with 6 service fuses position 4a).</u></b>
Size 3	Links	2	185mm <sup>2</sup> Al 3c+ 1c NS	---	Connect & lay west to new 3way "Avanda Lot 682", also 28m LV120Al3cNS across road to DBS 679/680.
Size 3	Open	3	185mm <sup>2</sup> Al 3c+ 1c NS	---	Connect cable from ex. kiosk "Finn Ave No2".
					Connect cable from new kiosk "Jean Batten Ln Lot 619".
Size 3	355amp	1	185mm <sup>2</sup> Al 3c+ 1c NS	Ex	<b><u>Avanda Lot 682 (replace DBS with 3 way M1, with 1 service fuse position 4a).</u></b>
Size 3	Links	2	185mm <sup>2</sup> Al 3c+ 1c NS	Ex & 6m	Connect cable from 3way "Jean Batten Lot 501".
Size 3	Open	3	185mm <sup>2</sup> Al 3c+ 1c NS	---	Connect cable from kiosk "Finn Ave No2". Across road; cut & swing LV to a new DBS for Lot 681 (allow 6m).
					Connect cable from new DCM "Dodd Lot 686".
					<u>For new DCMs, service fuses= Bus mount in position 4a for first 3 fuses &amp; 4b for next 3fuses(if required).</u>
Cable quantities for tender use, with 3mtrs allowed for each LV tails at DBS. Developer to complete all trenching and install 100mm ducts (Road crossings).					<div> <div>Accepted <b>Orion</b>  Paul Golding 01 12 2021</div> </div>
Sheet No.					refer HV, LV & SL schematics
4 of 8					Date: 28/10/2021 Issue: A Design-Net Ref: DN-2017

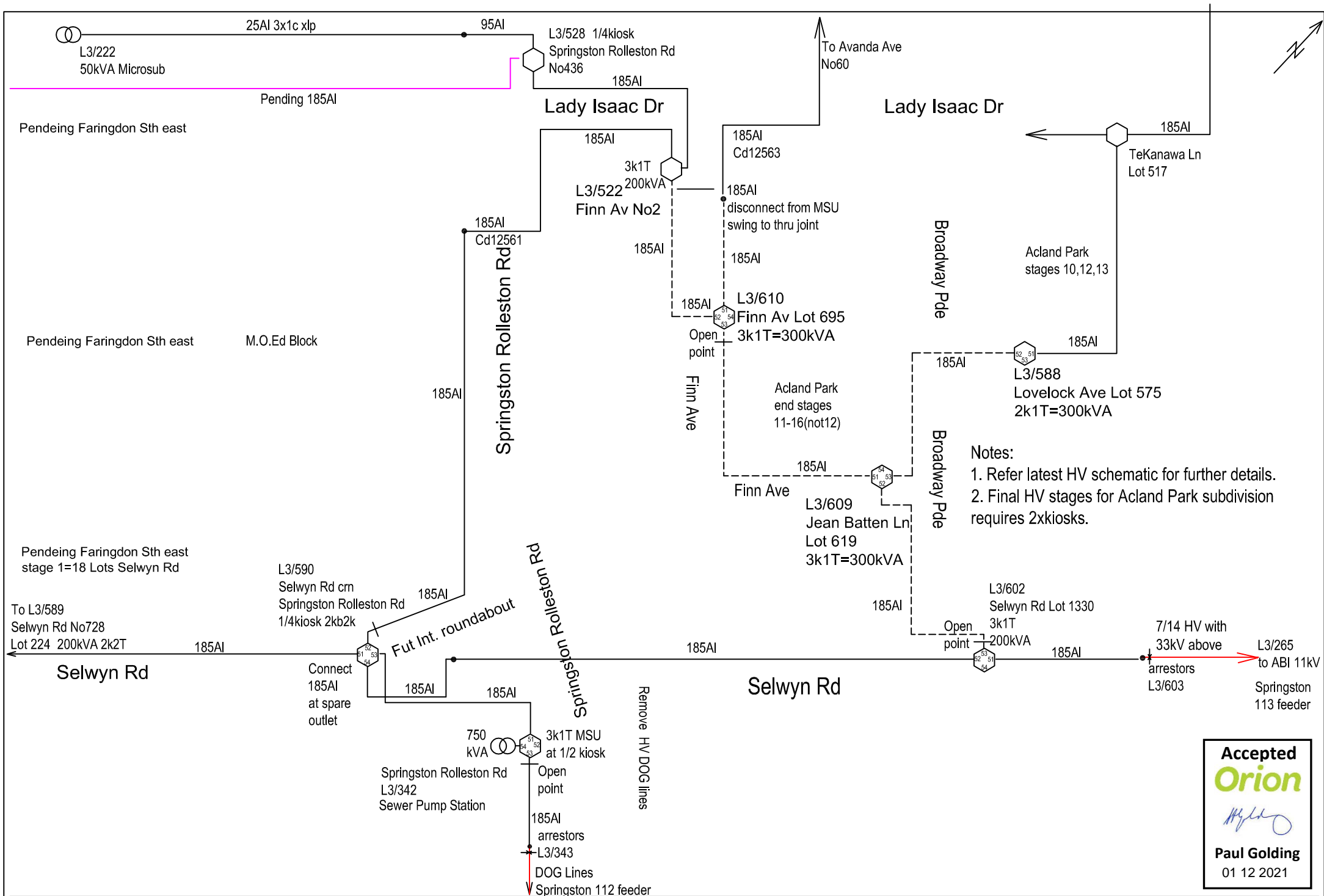
**Acland Park stages 11-16 not 12 (SLs, LV Mains & Major Materials).**

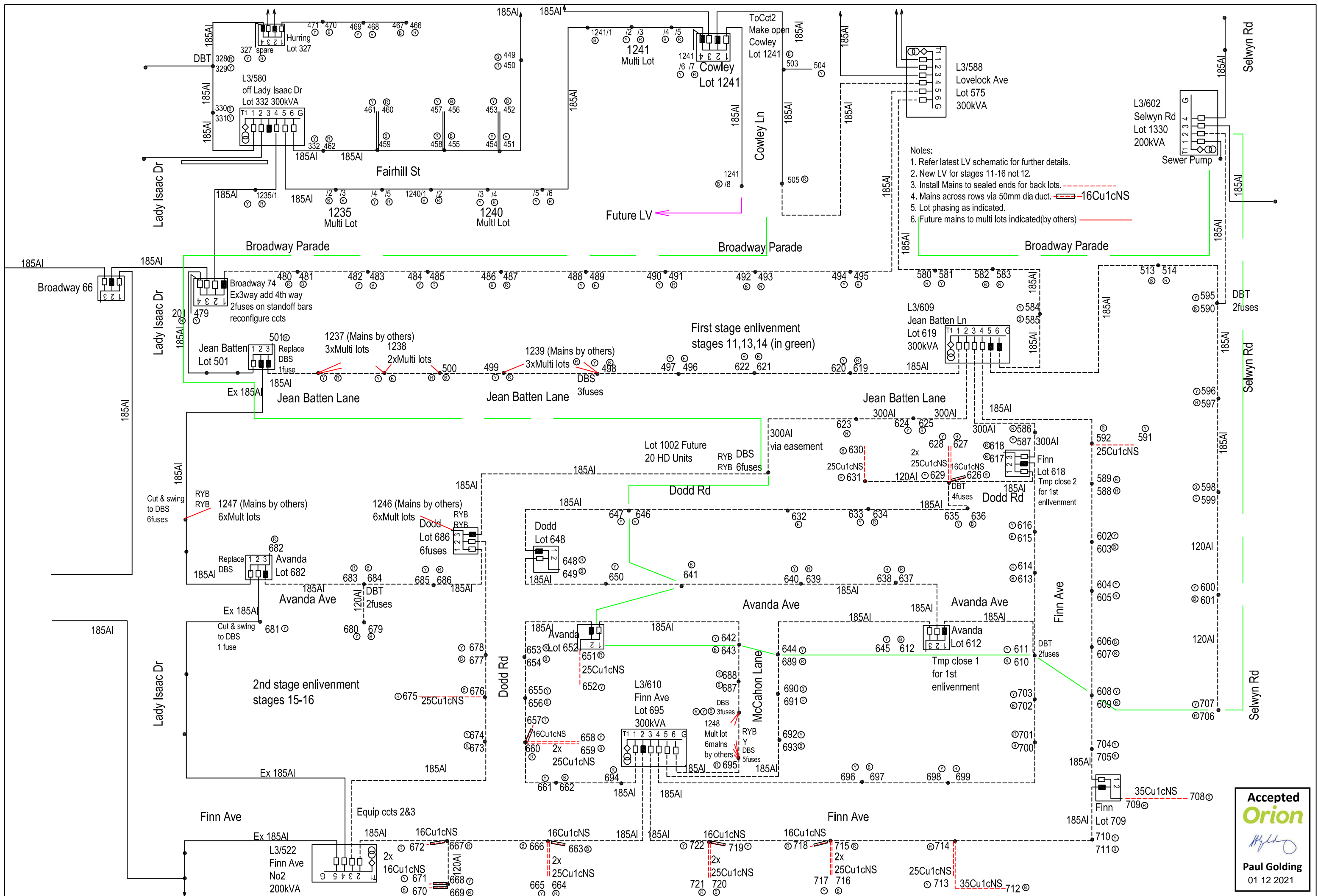
SIZE	FUSE/LINK	REF Cct.	CABLE SIZE	Tender Qty (mtr)	
			LV 16mm <sup>2</sup> 1c Cu NS	1,661	<p><b><u>Streetlight Cabling (Lights marked by surveyor to Windsor dwg prior to cabling)</u></b></p> <p>Install S/L cables as indicated on working dwg (connecting as shown on SL schematic). Supply lights from ex relay at "off Lady Isaac Dr Lot 400" L3/579 &amp; "Selwyn Rd Lot 1330" L3/602. Some LV16Cu1cNS has already been laid in Selwyn Rd (to use for 3 lights P10,P1&amp;P2 in red).</p> <p><b><u>Install (qty=67) new ground mount lights, to manufacturers requirements.</u></b></p> <p>Windsor Plans A3-400102 (in red 1-10 Selwyn Rd). A3-400119 for subd lights P1-P57.</p> <p>For new Lights allow for assembly, wiring, fuse panel &amp; pole hole digging.</p> <p><u>CoC required for each light. Lights delivered to site ready for assembly &amp; wiring with fuse panel.</u></p>
<b>Material Summary</b>		<b>Tender Qty.</b>	<b>Further Materials</b>		<b>Orion Supplied equipment</b>
<b>HV cable</b>		mtrs	2x Full Kiosks with accessories for		Transformers: 2x300kVA
185mm <sup>2</sup> Al 3c xlp		1,189	2x 300kVA Transformers & MSUs.		HV switchgear: Two 3k1T MSUs
			800amp DIN Panel, 800amp Incomers		
<b>LV cable</b>			500/5 CTs & MDIs		
300mm <sup>2</sup> Al 3c+ 1c Cu NS		278	DIN Ccts equipped as spec. page 2		
185mm <sup>2</sup> Al 3c+ 1c Cu NS		4,313	Fuse sets for kiosks as specified.		<b><u>Install LV Mains cabling to Sealed Ends for back lots. Coc required.</u></b>
120mm <sup>2</sup> Al 3c+ 1c Cu NS		255	MSU HV fuses 2 sets 25FDL NJ		Install (2) LV35Cu1cNS Mains to sealed ends. (Hazard strip at 1/2 trench depth).
16mm <sup>2</sup> 1c Cu NS S/L		1,661	Kiosk Earthing for two new sites.		Install (15) LV25Cu1cNS Mains to sealed ends. (Hazard strip at 1/2 trench depth).
			<b><u>Equip two DIN ccts at kiosk L3/522</u></b>		Install (8) LV16Cu1cNS via 50mmdia ducts to sealed ends. (Hazard strip at 1/2 trench depth).
<b>Internal Kiosk Leads</b>		qty	two sets 355amp fuses.		
LV 185mm <sup>2</sup> 4x1cCuXLP		2 sets	<b>LV Boxes</b>		<b><u>Extra dig &amp; backfill required at several locations:</u></b>
HV 25mm <sup>2</sup> Al 3x1cXLP		2 sets	5 x new DBT with 2xfuses		Ex Kiosks x3 (for new cables)
			75 x new DBS with fuses/lots		1xHV thru joint after cable disconnected from kiosk Finn Ave No2, with drawn from duct to jt location.
<b>HV Terminations &amp; Jt</b>					2xLV cut & swings (Avanda Ave & Lady Isaac Dr).
185mm <sup>2</sup> Al 3c xlp MSU		9	<b>Distribution Cabinets. DCMs</b>		
185mm <sup>2</sup> Al 3c xlp Joint		1	Add 1 cct to 4way with 2 service fuses.		
HV 25mm <sup>2</sup> Al 3x1cXLP ends		2	standoff terminals required.		
Push fit Transformer end					
<b>LV Mains to Sealed Ends</b>		mtrs	5x 3way M1, bus mount service fuses.		
35mm <sup>2</sup> Cu 1c NS (2 lots)		96			
25mm <sup>2</sup> Cu 1c NS (15 lots)		491	3x 2way M1, bus mount service fuses.		
16mm <sup>2</sup> Cu 1c NS (8 lots)		80	<b>LV thru joints for 2xcut &amp; swings</b>		
50mm dia ducts rows (8lots)		32	2x 185mm <sup>2</sup> Al 3c+ 1c Cu NS		Install kiosk pads to Orion standard foundation dwgs.
Notes: All cable quantities are for tender purposes, with 3m allowed for each cable tail at DBS & SL, 5m at kiosk.				Sheet No.	Date: 28/10/2021
				5 of 8	Issue: A
					Design-Net Ref: DN-2017

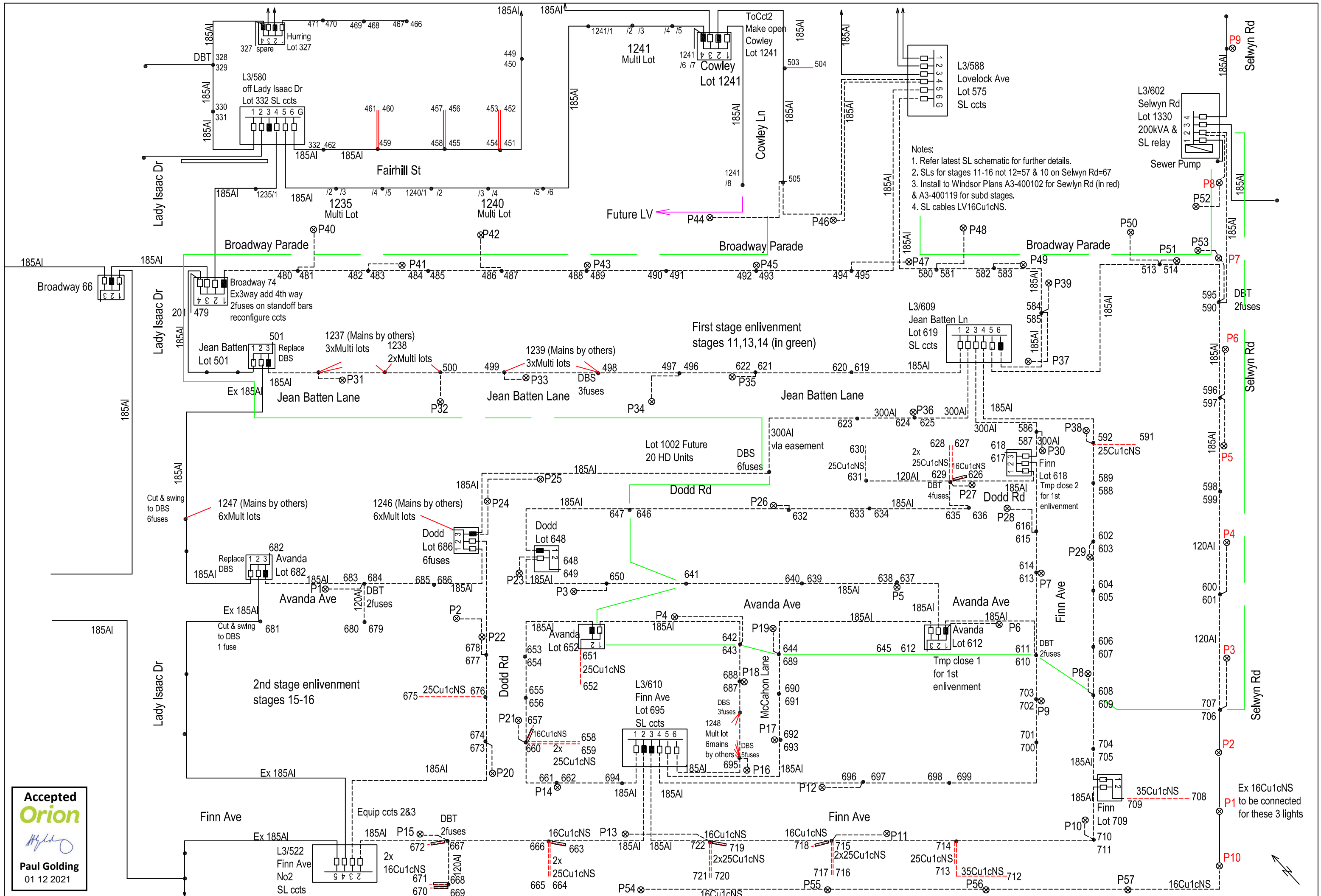
Accepted  
**Orion**

*Hyd*

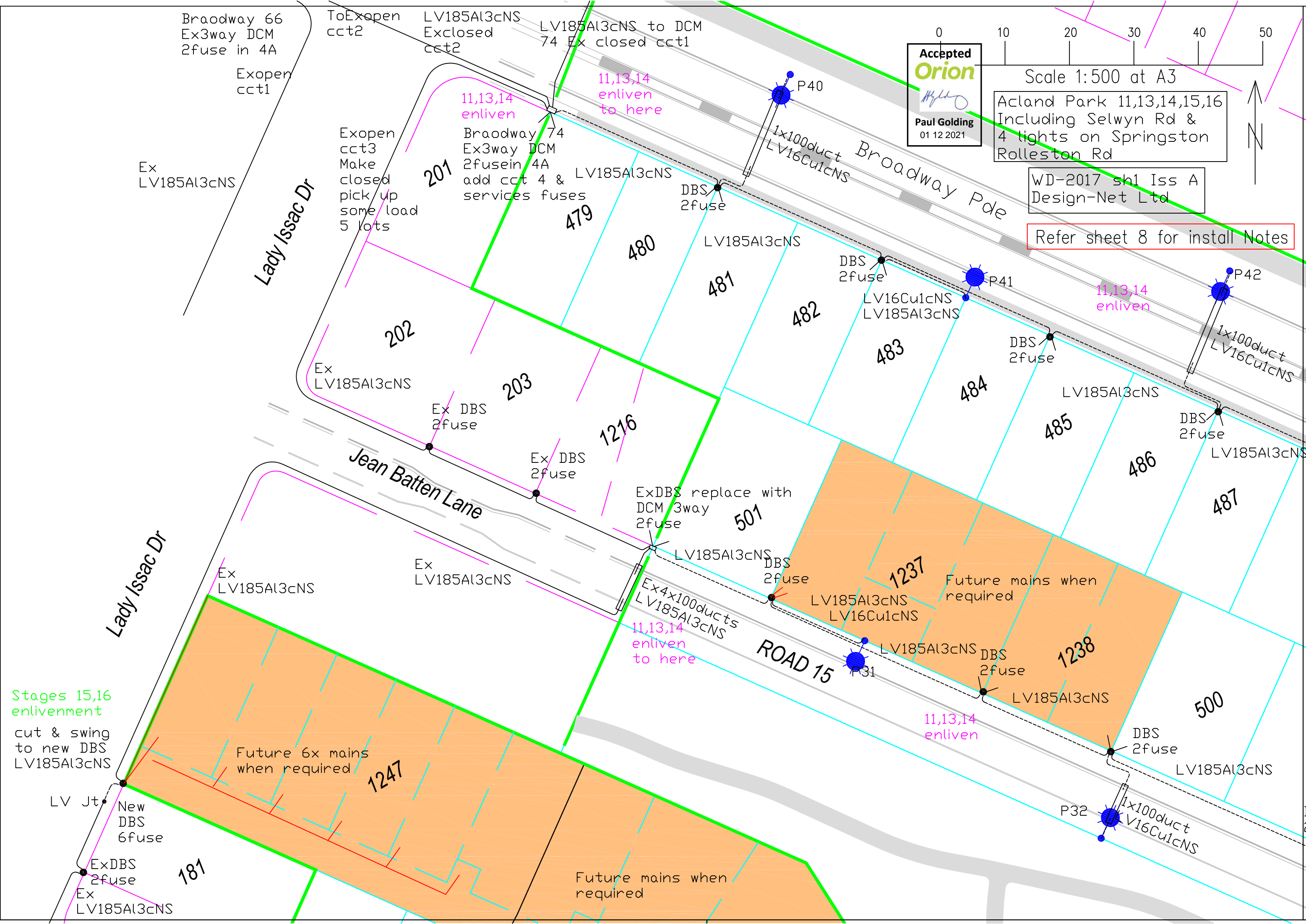
Paul Golding  
01 12 2021







Accepted  
**Orion**  
*Hydro*  
Paul Golding  
01 12 2021



Braodway 66  
Ex3way DCM  
2fuse in 4A

Exopen  
cct1

ToExopen  
cct2

LV185Al3cNS  
Exclosed  
cct2

LV185Al3cNS to DCM  
74 Ex closed cct1

Accepted  
**Orion**  
*Mylio*  
Paul Golding  
01 12 2021

0 10 20 30 40 50

Scale 1:500 at A3

Acland Park 11,13,14,15,16  
Including Selwyn Rd &  
4 lights on Springston  
Rolleston Rd

WD-2017 sh1 Iss A  
Design-Net Ltd

Refer sheet 8 for install Notes

Ex  
LV185Al3cNS

Lady Issac Dr

Exopen  
cct3  
Make  
closed  
pick up  
some load  
5 lots

Braodway 74  
Ex3way DCM  
2fusein 4A  
add cct 4 &  
services fuses

11,13,14  
enliven  
to here

DBS  
2fuse

1x100duct  
LV16Cu1cNS

Broadway Pde

LV185Al3cNS

DBS  
2fuse

LV16Cu1cNS  
LV185Al3cNS

P41

DBS  
2fuse

11,13,14  
enliven

1x100duct  
LV16Cu1cNS

P42

LV185Al3cNS

DBS  
2fuse

LV185Al3cNS

Ex  
LV185Al3cNS

Ex DBS  
2fuse

Ex DBS  
2fuse

ExDBS replace with  
DCM 3way  
2fuse

LV185Al3cNS

DBS  
2fuse

Ex4x100ducts  
LV185Al3cNS

11,13,14  
enliven  
to here

ROAD 15

P31

LV185Al3cNS  
LV16Cu1cNS

LV185Al3cNS

Future mains when  
required

DBS  
2fuse

LV185Al3cNS

DBS  
2fuse

LV185Al3cNS

1x100duct  
LV16Cu1cNS

P32

Stages 15,16  
enlivenment

cut & swing  
to new DBS  
LV185Al3cNS

LV Jt.  
New  
DBS  
6fuse

ExDBS  
2fuse  
Ex  
LV185Al3cNS

Future 6x mains  
when required

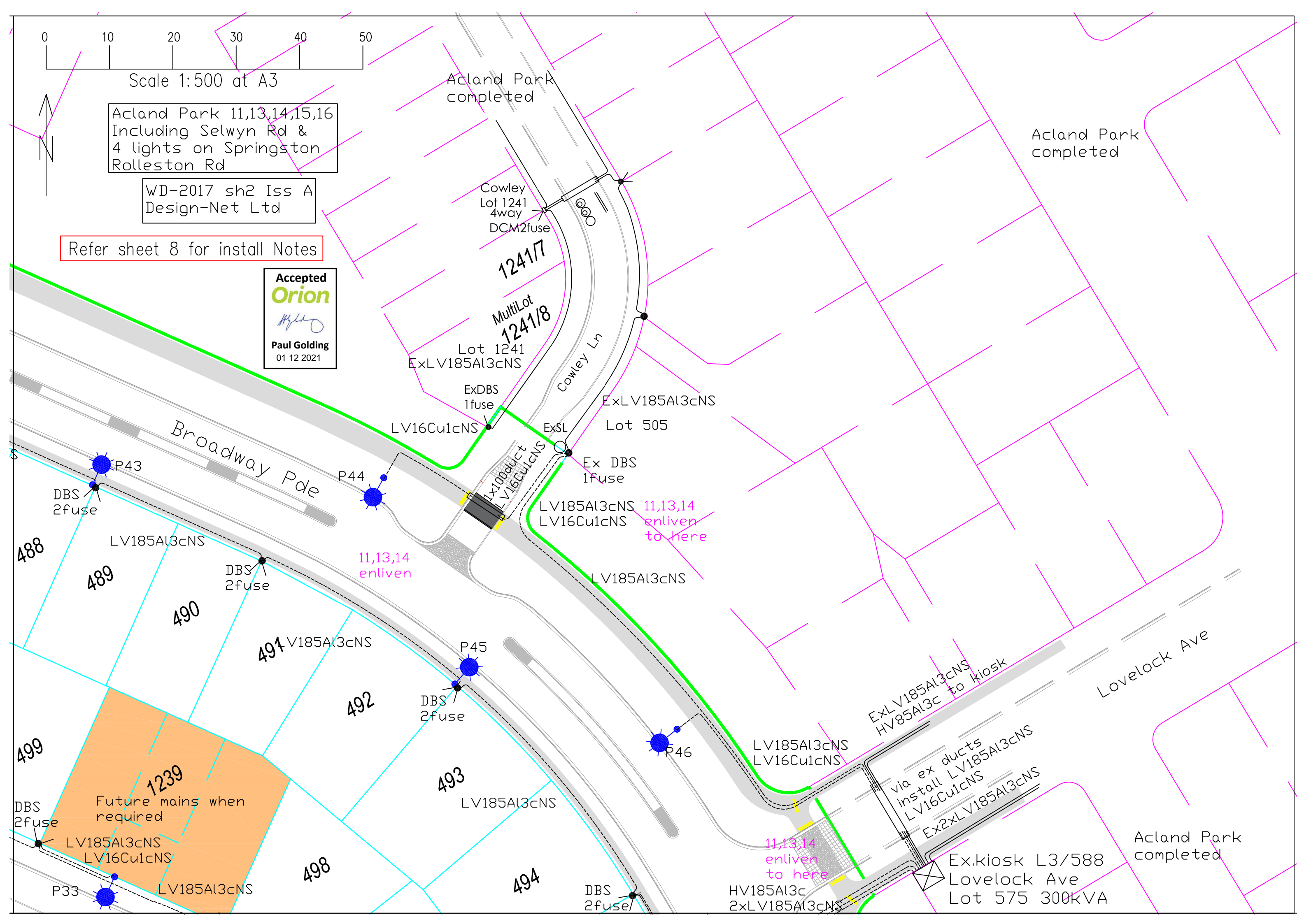
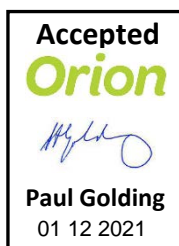
Future mains when  
required

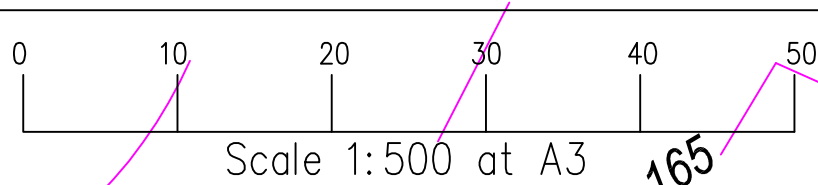
Scale 1:500 at A3

Acland Park 11,13,14,15,16  
Including Selwyn Rd &  
4 lights on Springston  
Rolleston Rd

WD-2017 sh2 Iss A  
Design-Net Ltd

Refer sheet 8 for install Notes

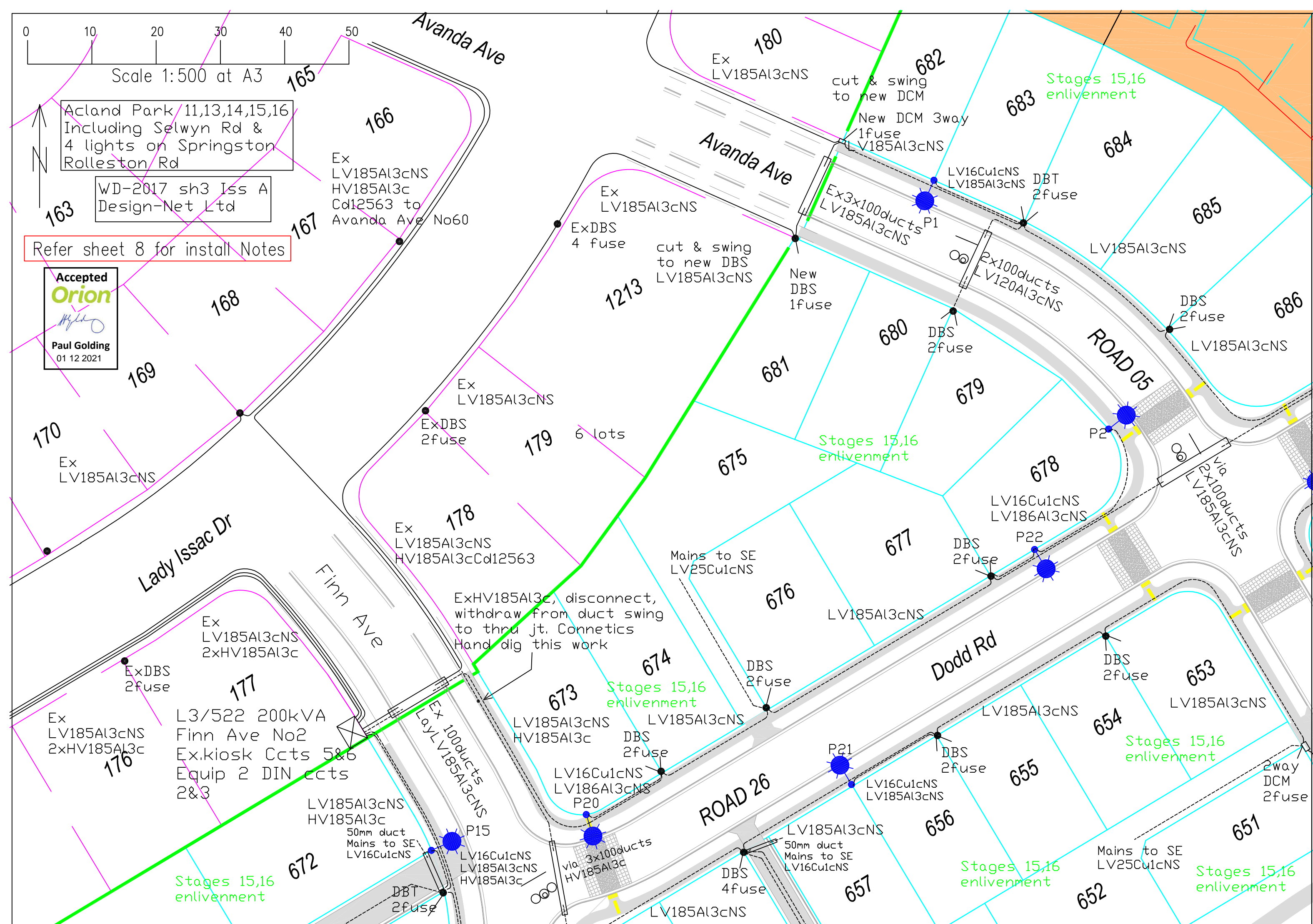


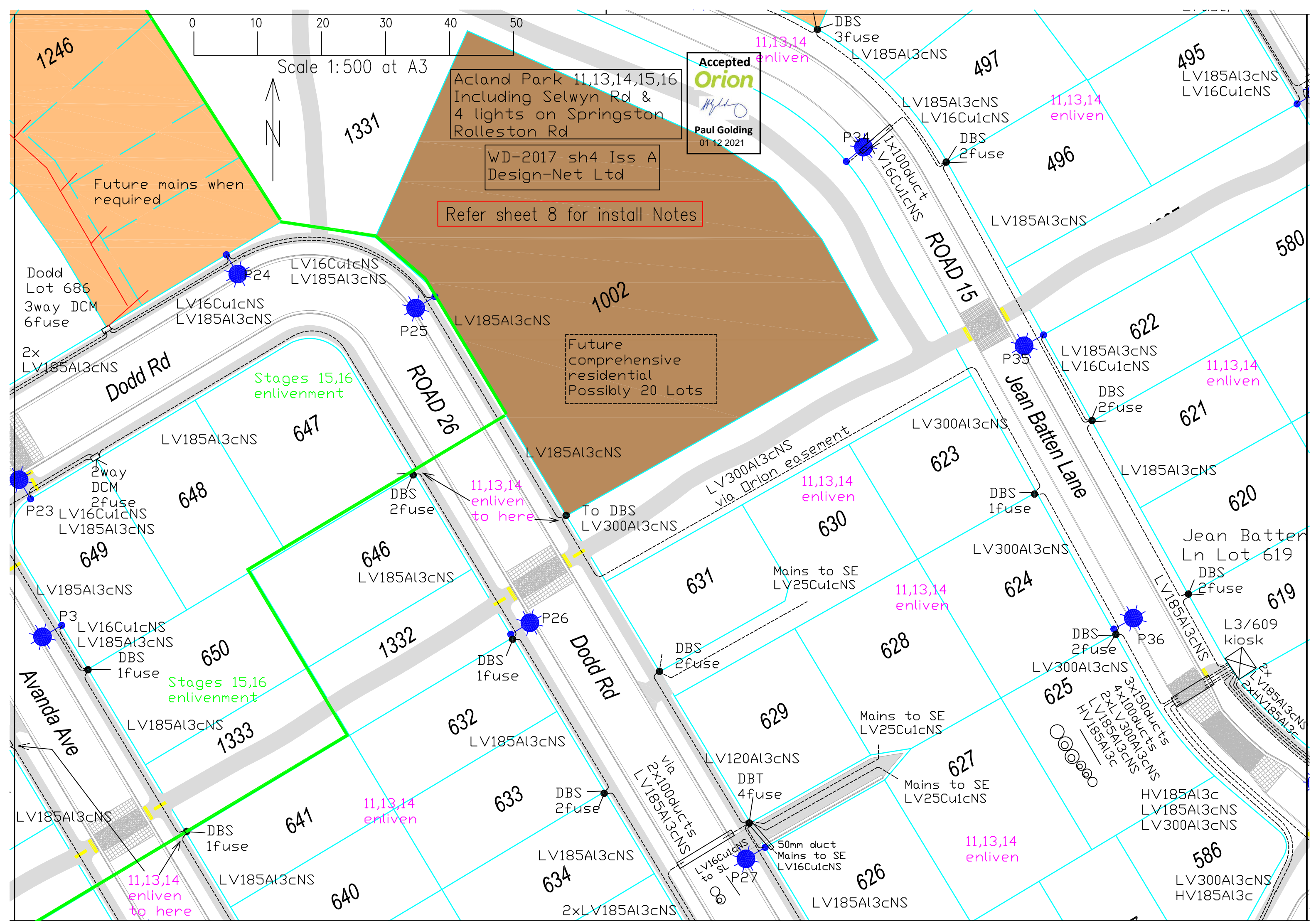


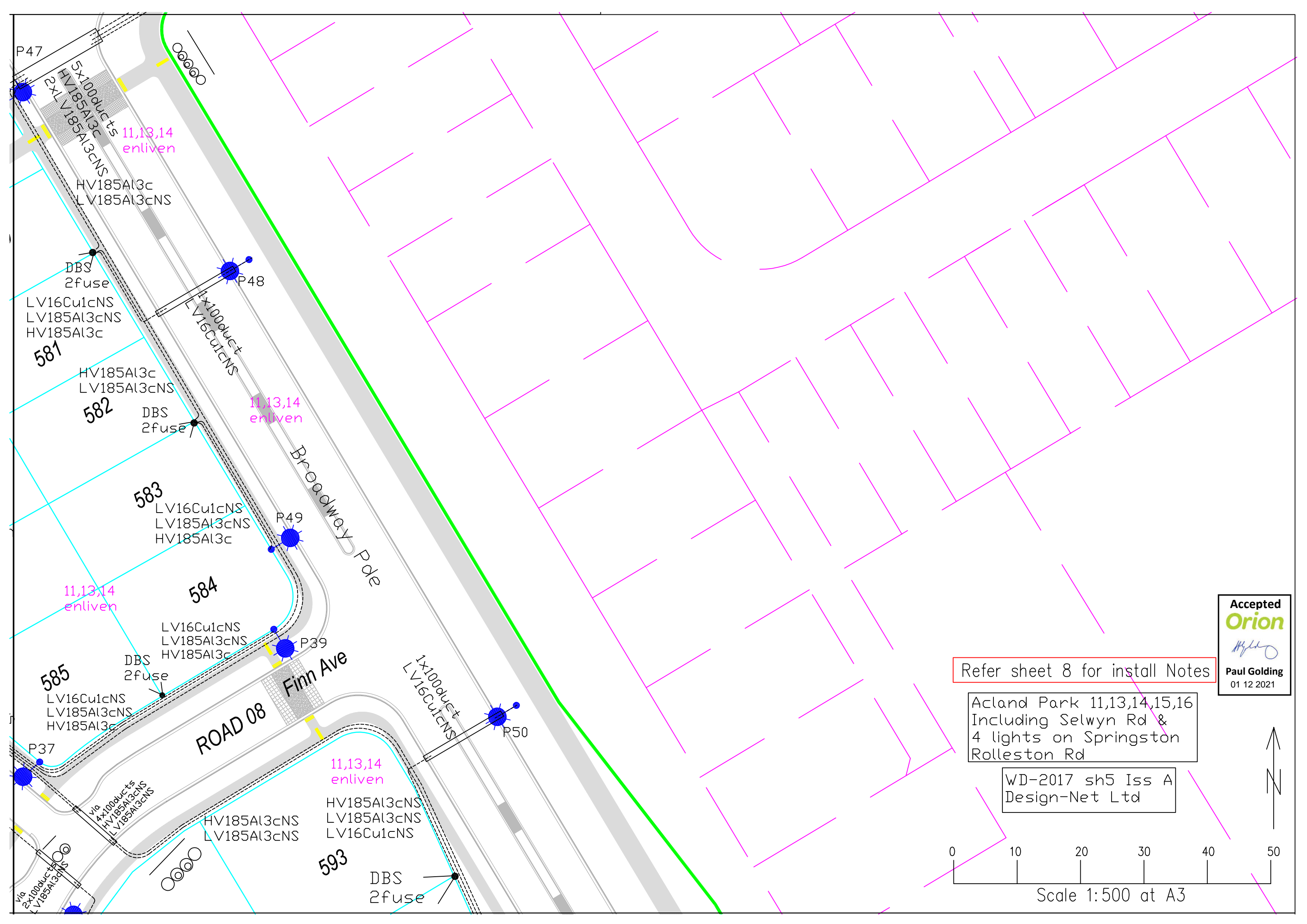
~~Acland Park 11,13,14,15,16  
Including Selwyn Rd &  
4 lights on Springston  
Rolleston Rd~~

WD-2017 sh3 Iss A  
Design-Net Ltd

Refer sheet 8 for install Notes





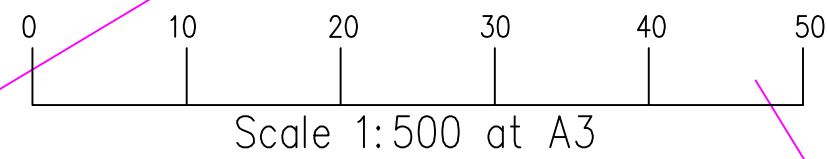


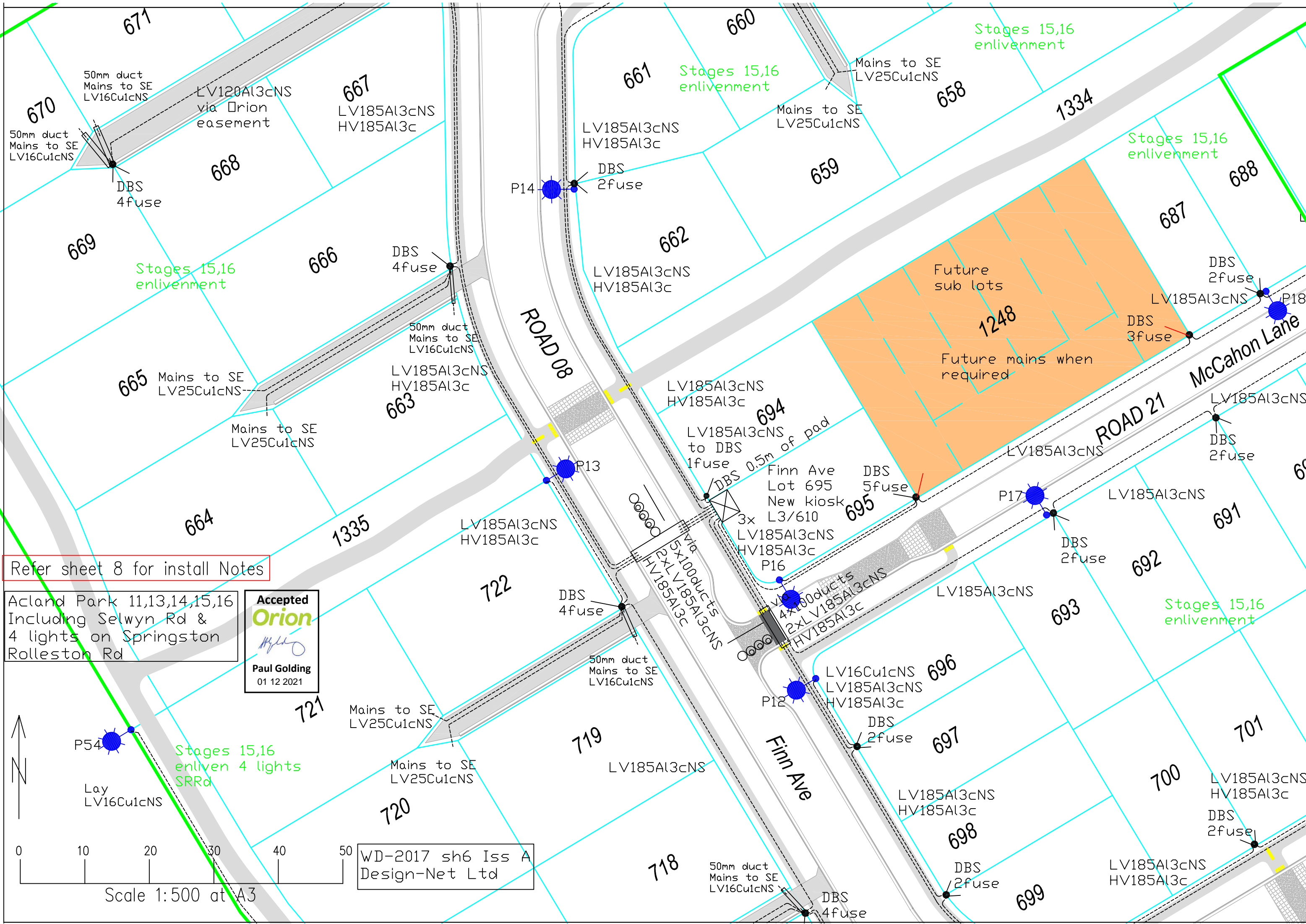
Accepted  
**Orion**  
*Hydro*  
**Paul Golding**  
01 12 2021

Refer sheet 8 for install Notes

Acland Park 11,13,14,15,16  
Including Selwyn Rd &  
4 lights on Springston  
Rolleston Rd

WD-2017 sh5 Iss A  
Design-Net Ltd

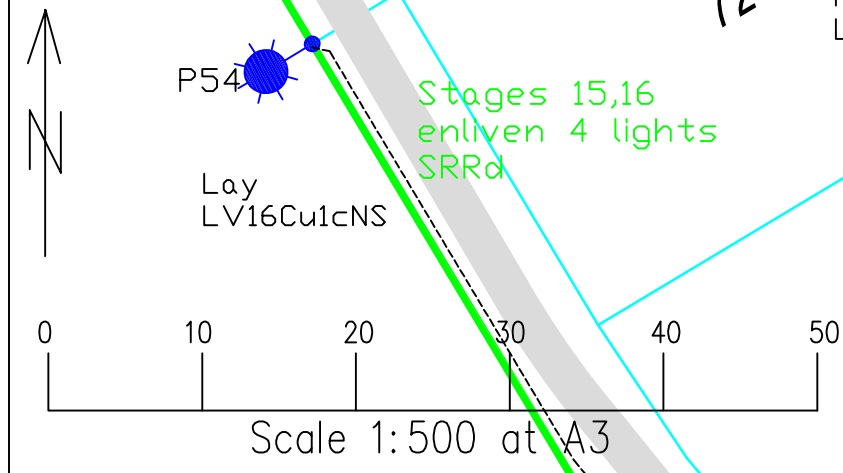




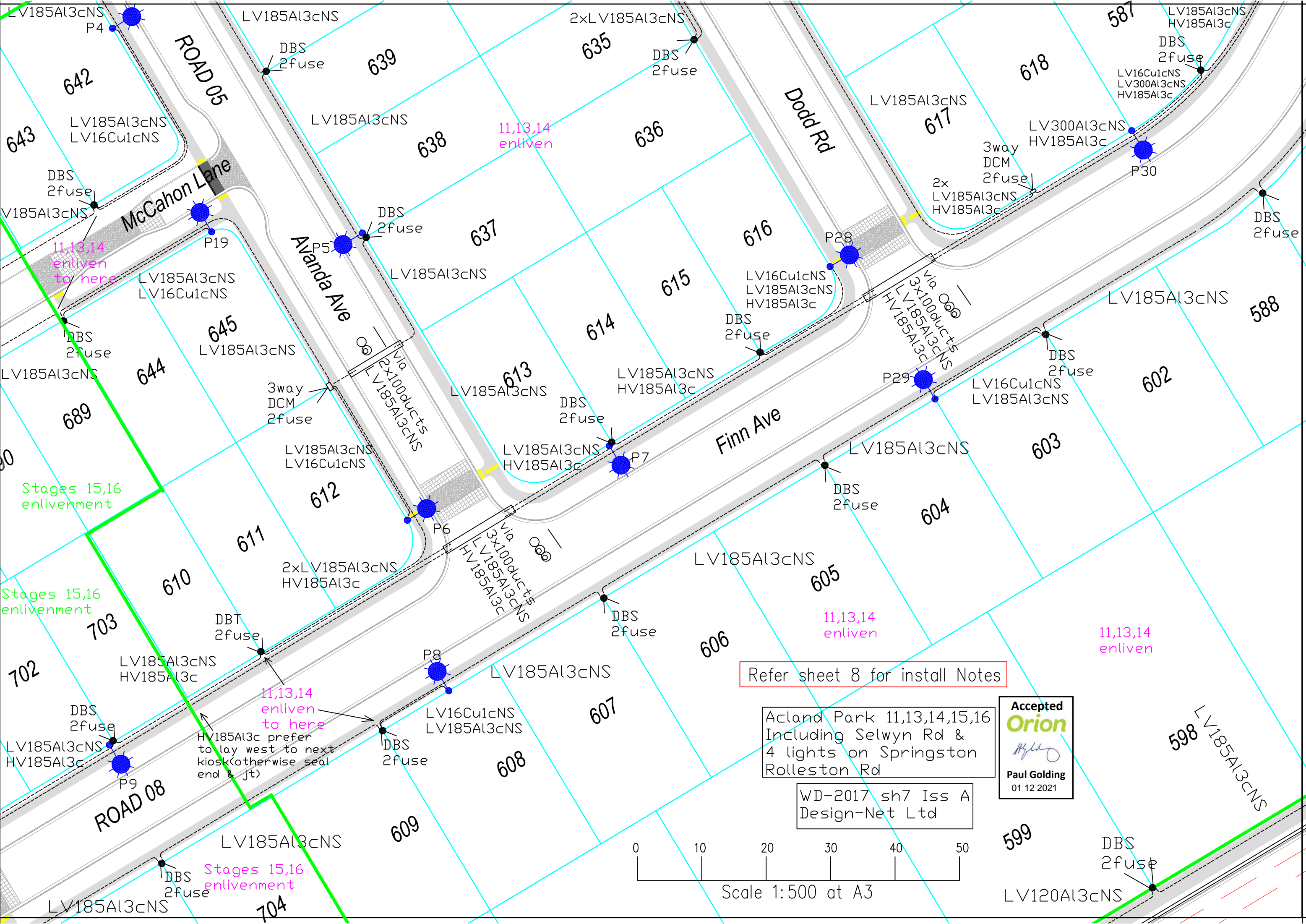
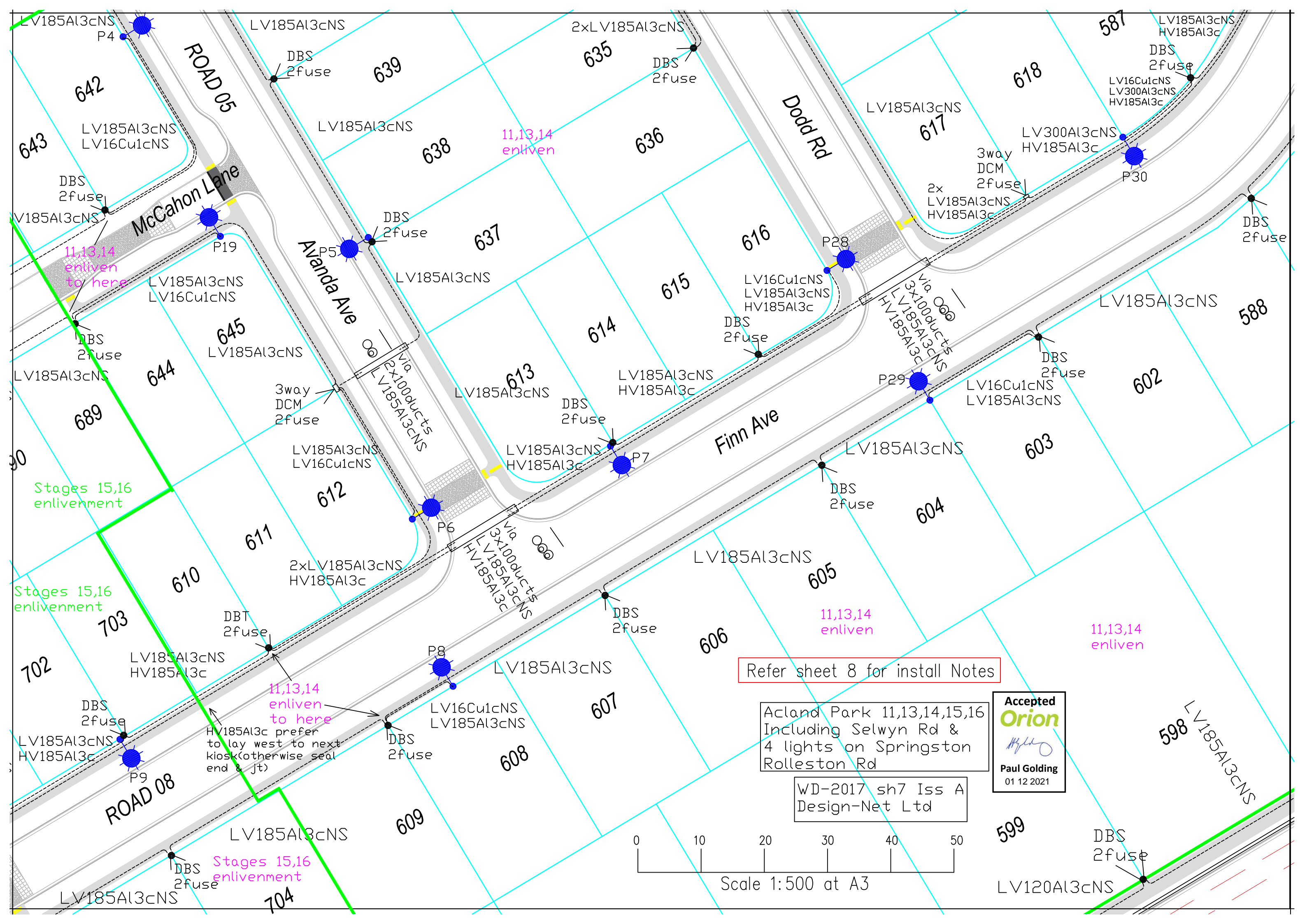
Refer sheet 8 for install Notes

Accland Park 11,13,14,15,16  
Including Selwyn Rd &  
4 lights on Springston  
Rolleston Rd

Accepted  
**Orion**  
*Mylin*  
**Paul Golding**  
01 12 2021



WD-2017 sh6 Iss A  
Design-Net Ltd

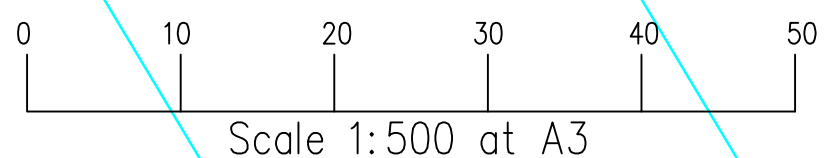


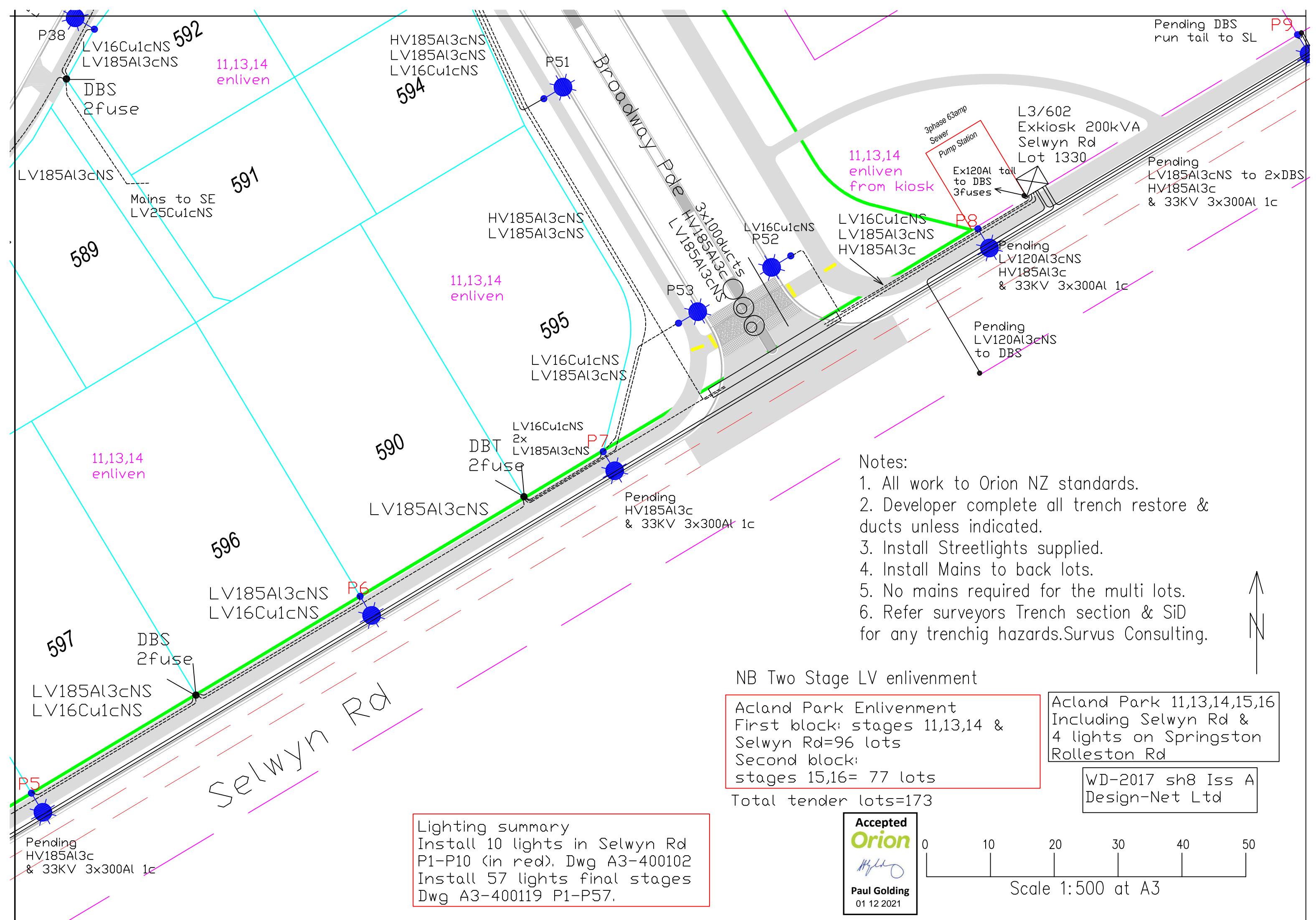
Refer sheet 8 for install Notes

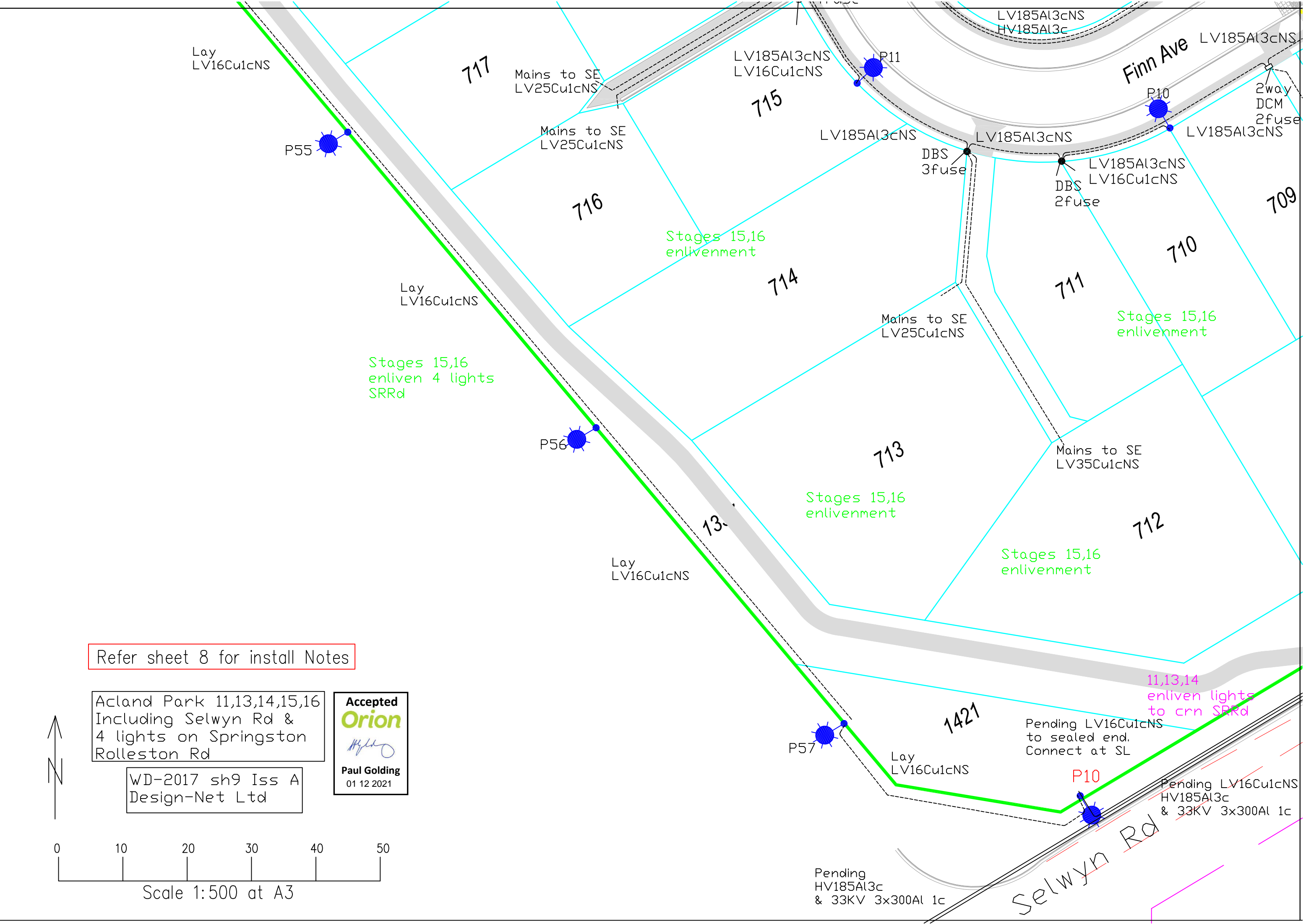
Acland Park 11,13,14,15,16  
Including Selwyn Rd &  
4 lights on Springston  
Rolleston Rd

WD-2017 sh7 Iss A  
Design-Net Ltd

Accepted  
**Orion**  
*Mylo*  
Paul Golding  
01 12 2021







Refer sheet 8 for install Notes

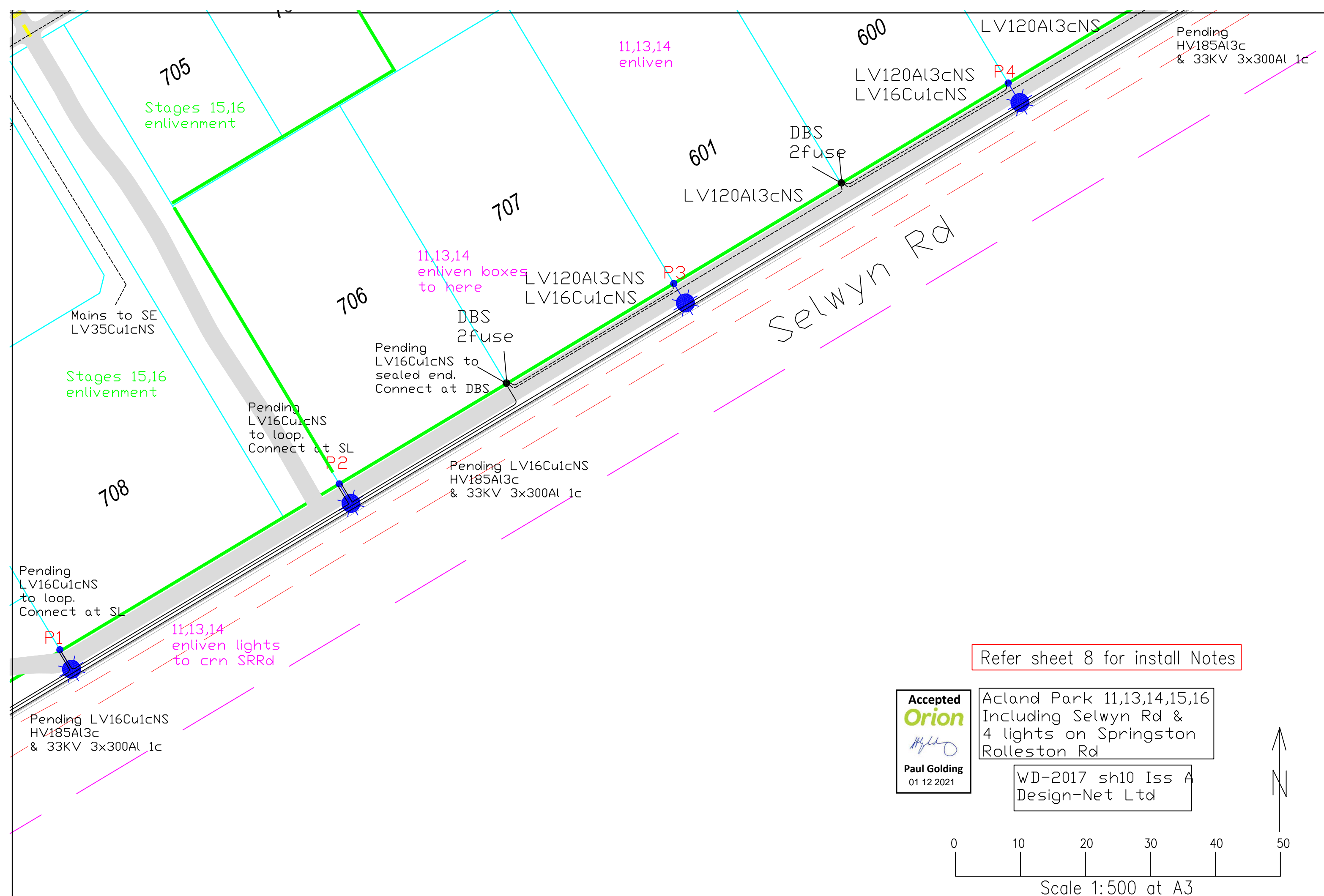
Acland Park 11,13,14,15,16  
Including Selwyn Rd &  
4 lights on Springston  
Rolleston Rd

WD-2017 sh9 Iss A  
Design-Net Ltd


**Accepted**  
**Orion**  
*Hydro*  
**Paul Golding**  
01 12 2021



0 10 20 30 40 50  
Scale 1:500 at A3

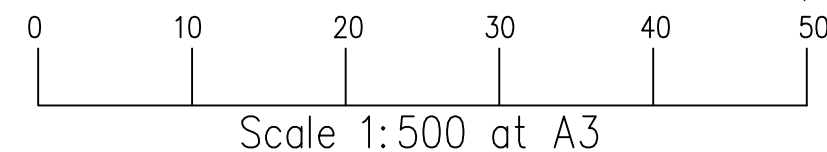


Refer sheet 8 for install Notes

Accepted  
**Orion**  
  
**Paul Golding**  
01 12 2021

Acland Park 11,13,14,15,16 Including Selwyn Rd & 4 lights on Springston Rolleston Rd
---

WD-2017 sh10 Iss A  
Design-Net Ltd





- Notes:
1. All work to Orion NZ standards.
  2. Developer complete all trench restore & ducts unless indicated.
  3. Install Streetlights supplied.
  4. Install Mains to back lots.
  5. No mains required for the multi lots.
  6. Refer surveyors trench section & SID for any trenching hazards.Survis Consulting.

NB Two Stage LV enlivenment

Acland Park Enlivenment  
First block stages 11,13,14 & Selwyn Rd  
Including Selwyn Rd & 4 lights on Springston  
Rolleston Rd

Acland Park 11,13,14,15,16  
Including Selwyn Rd & 4 lights on Springston  
Rolleston Rd

WD-2017 sh7 Iss A  
Design-Net Ltd

Total tender lots=173

Acland Park Enlivenment  
First block 11,13,14 & Selwyn Rd  
10 lights & Lots Total=96 lots  
Second block 15,16 plus 4 lights  
Springston Rolleston Rd 77 lots

Lighting summary  
Install 10 lights in Selwyn Rd  
P1-P10 on real Deg A3-400102  
Install 57 lights final stages  
Deg A3-400119 P1-P57.